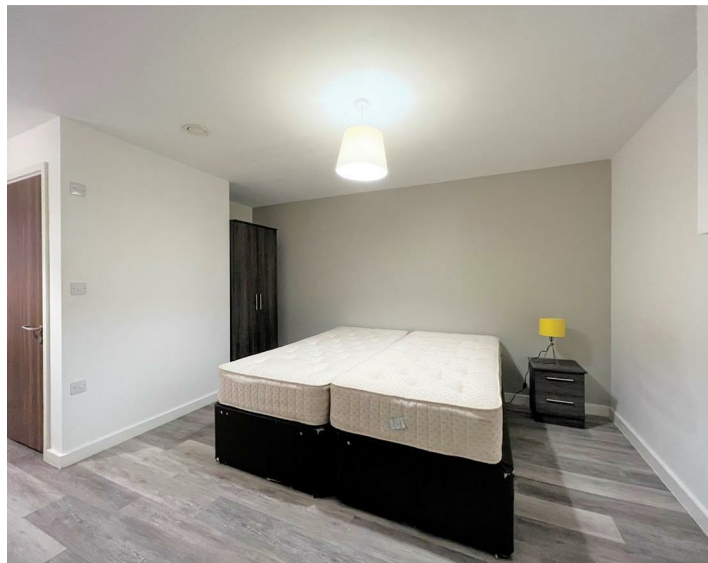


Apt 59 4 Leigh Street, Liverpool, L1 1NT  
£750 PCM

WWW.  
cityresidential  
.co.uk



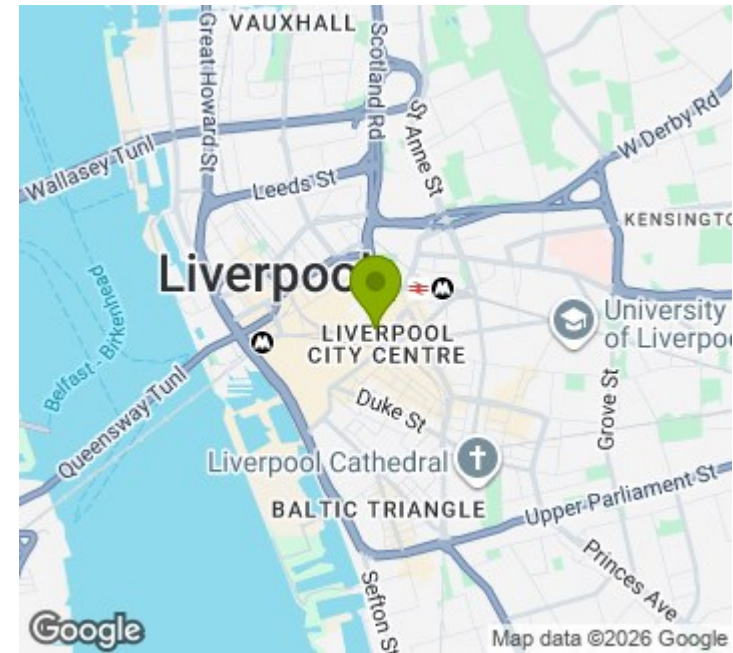
## About the Property

Available to Let is this well presented fifth floor, studio apartment in the heart of Liverpool City Centre. Situated on Leigh Street, it is ideally located for all the amenities the city centre has to offer and is just a short walk from both Liverpool Central and Liverpool Lime Street Stations.

This development is serviced by a lift to all floors and there is no parking available with this property.

Call us now on 0151 231 6100 to arrange a viewing.

- EPC Rating - C
- Council Tax Band - A
- Deposit - £865
- Fully Furnished, Studio Apartment
- City Centre
- No Parking



## Energy Efficiency Rating

	Current	Potential
Very energy efficient - lower running costs		
(92 plus) <b>A</b>		
(81-91) <b>B</b>		
(69-80) <b>C</b>	<b>73</b>	<b>73</b>
(55-68) <b>D</b>		
(39-54) <b>E</b>		
(21-38) <b>F</b>		
(1-20) <b>G</b>		
Not energy efficient - higher running costs		
<b>England &amp; Wales</b>	EU Directive 2002/91/EC	



City Residential

81/87 Victoria Street, The Old Haymarket, Liverpool L1 6DG

T: 0151 231 6100 F: 0151 231 6105

E: sales@cityresidential.co.uk



WWW.  
cityresidential  
.co.uk